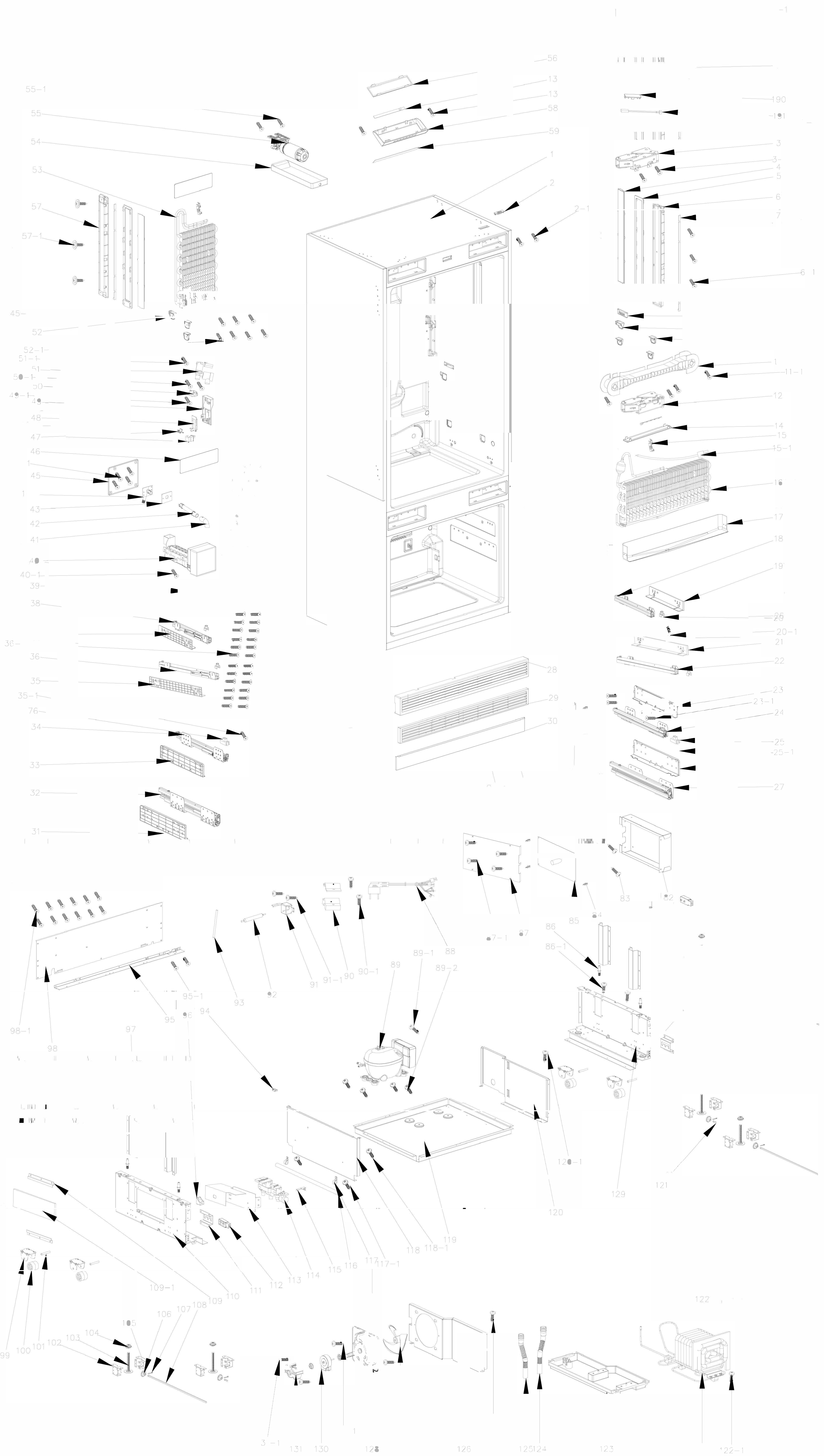
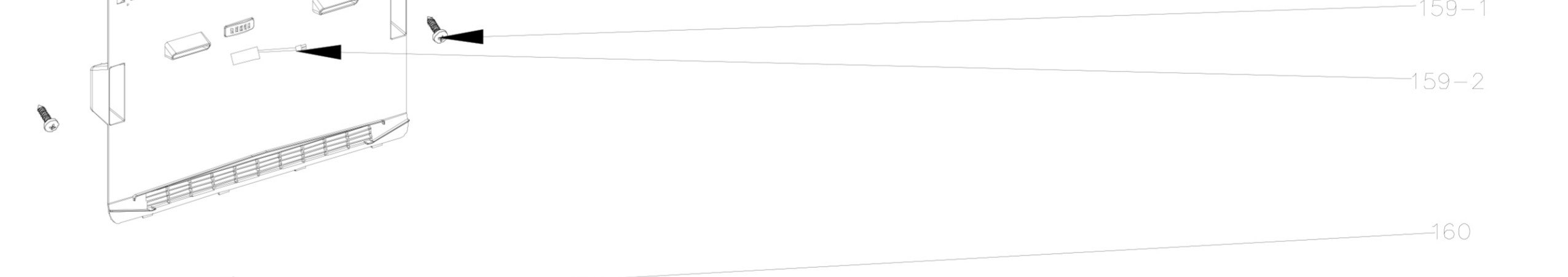
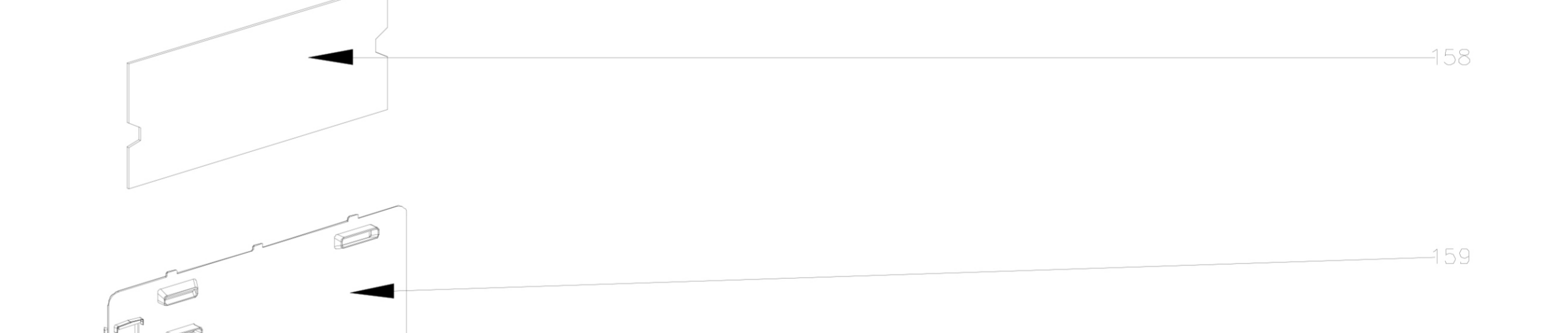
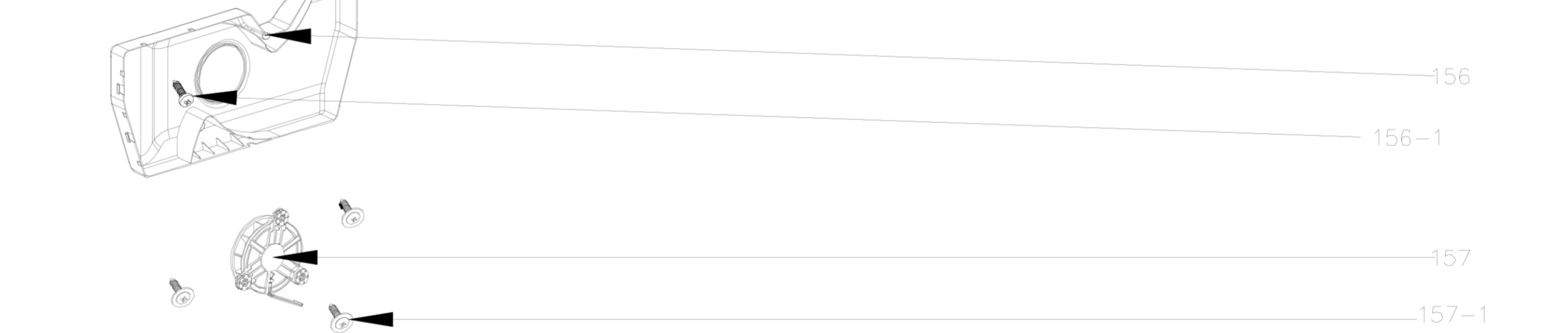
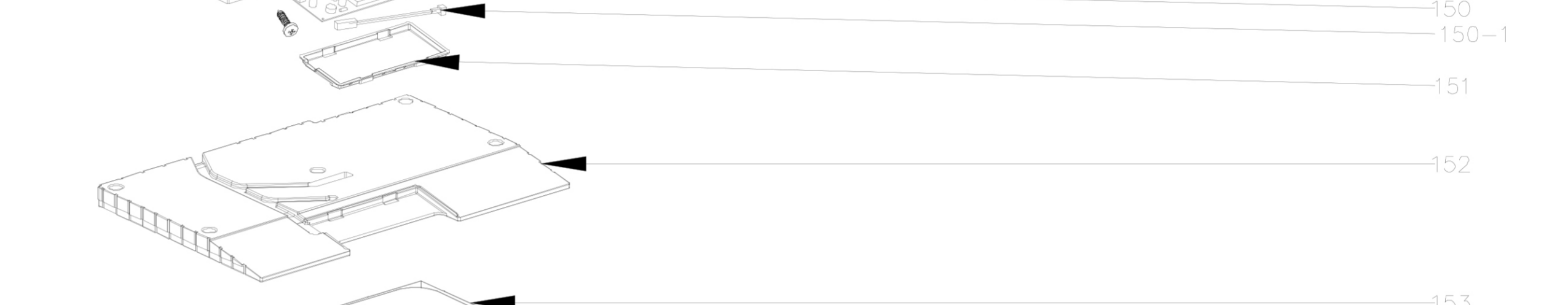
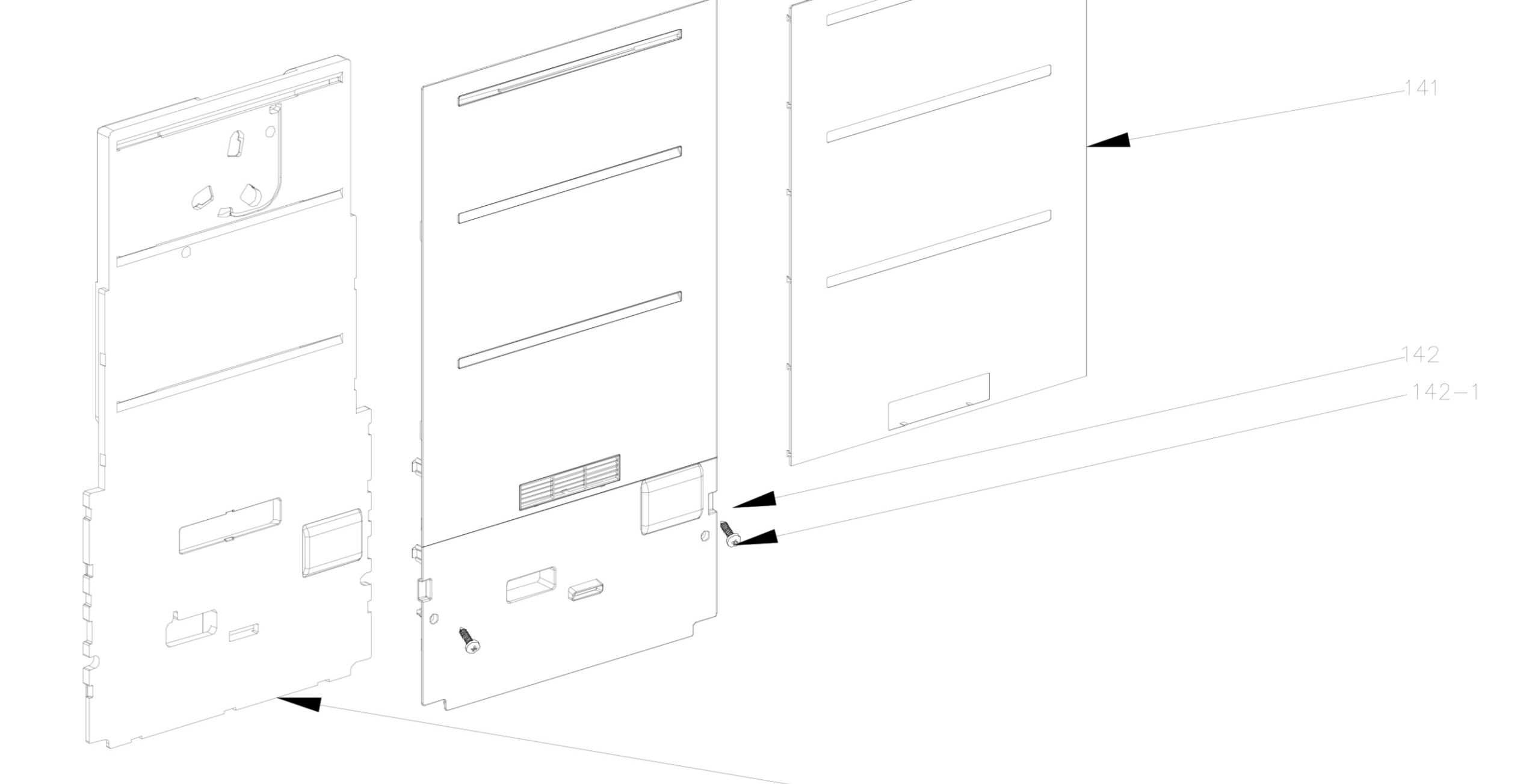
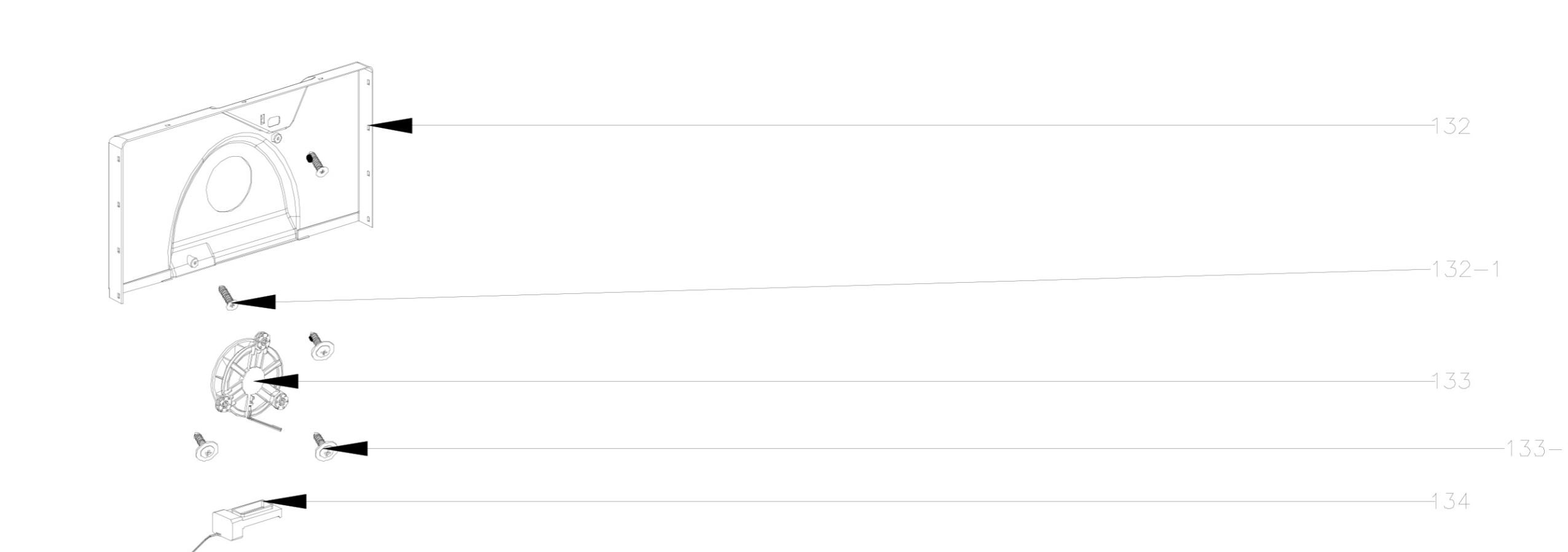
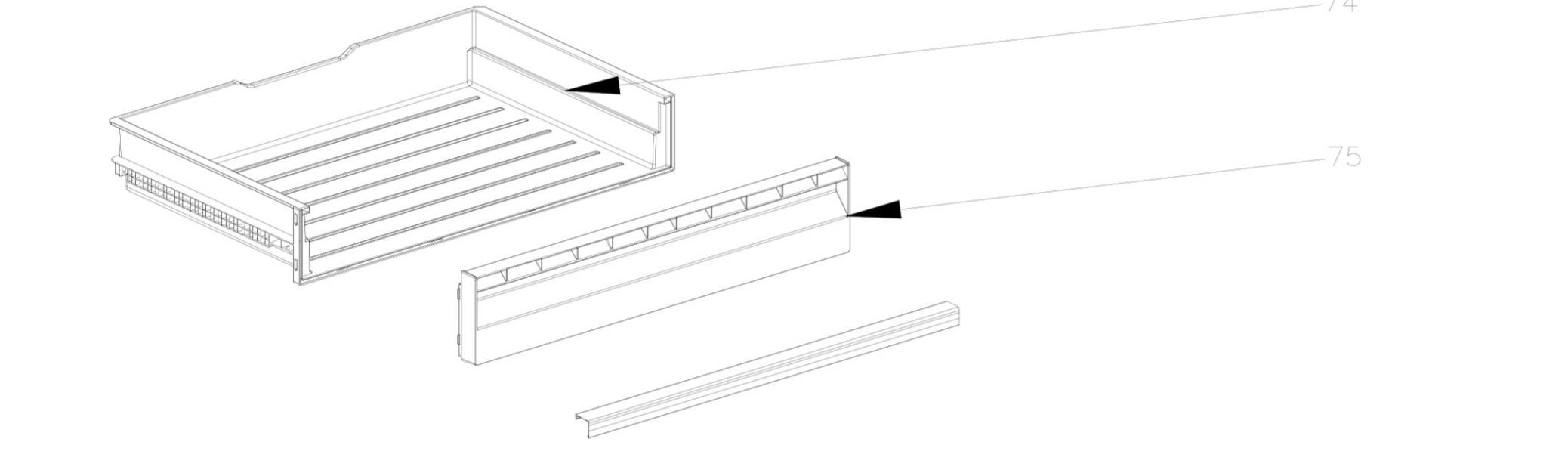
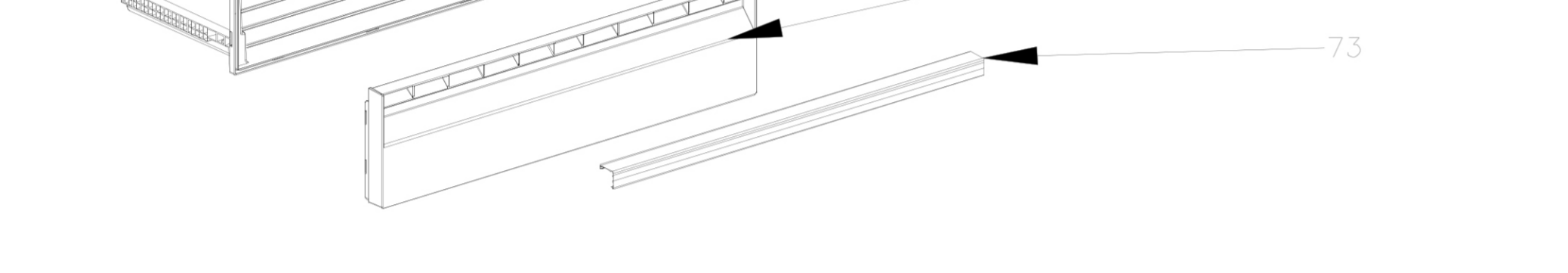
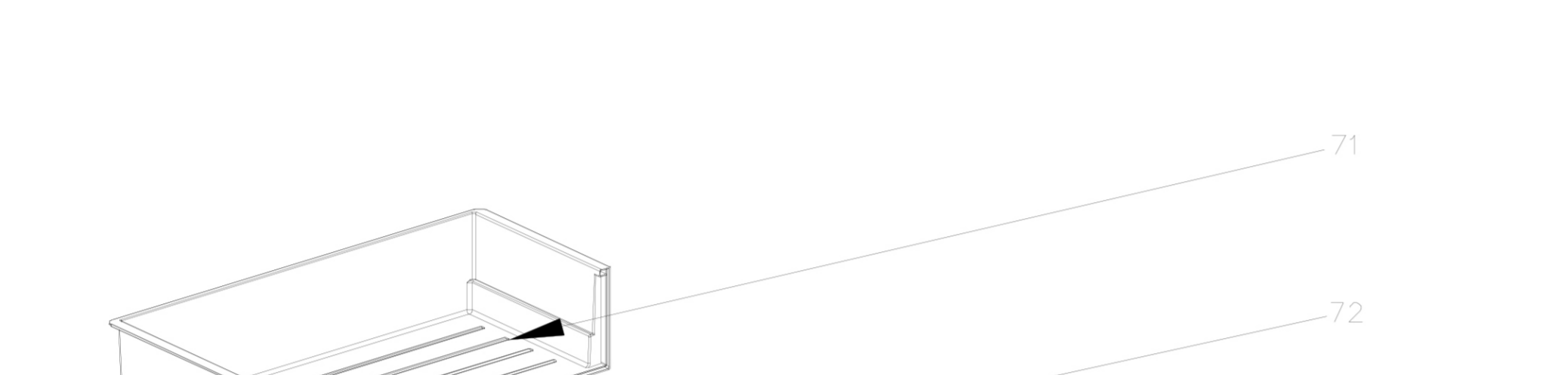
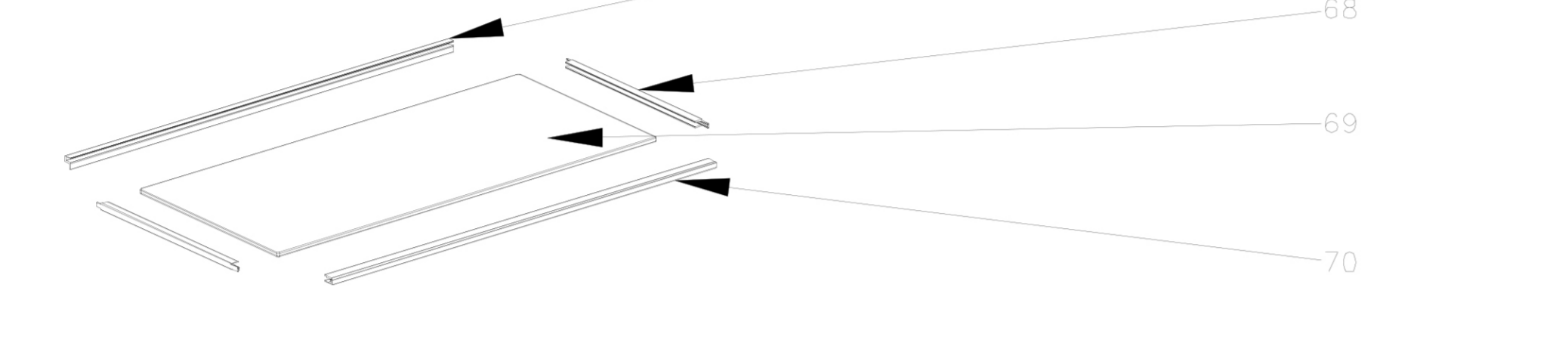
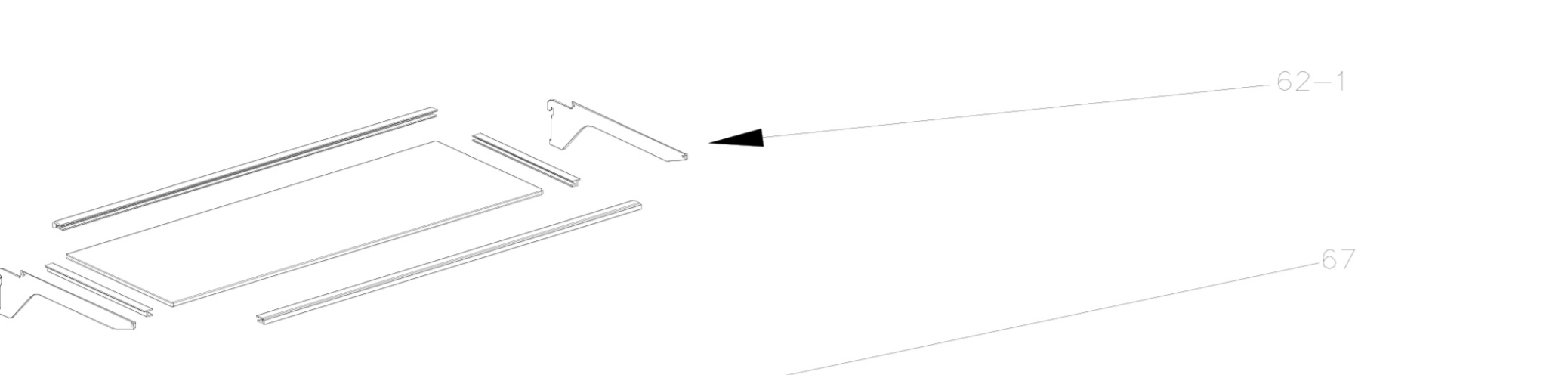
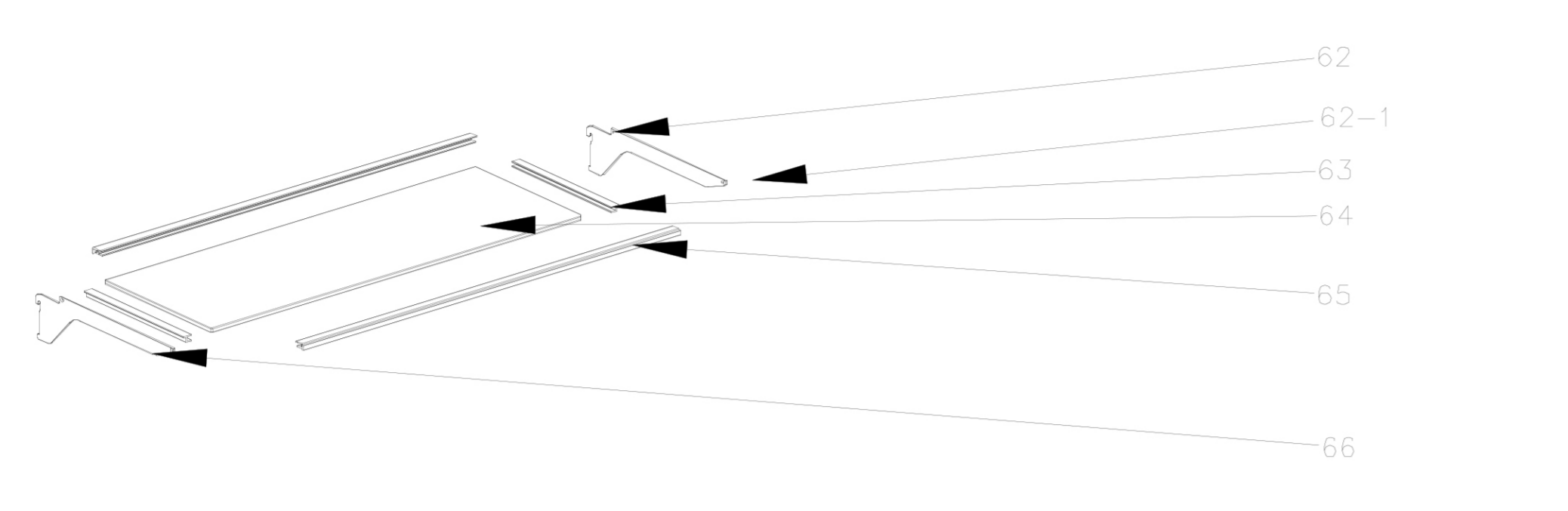
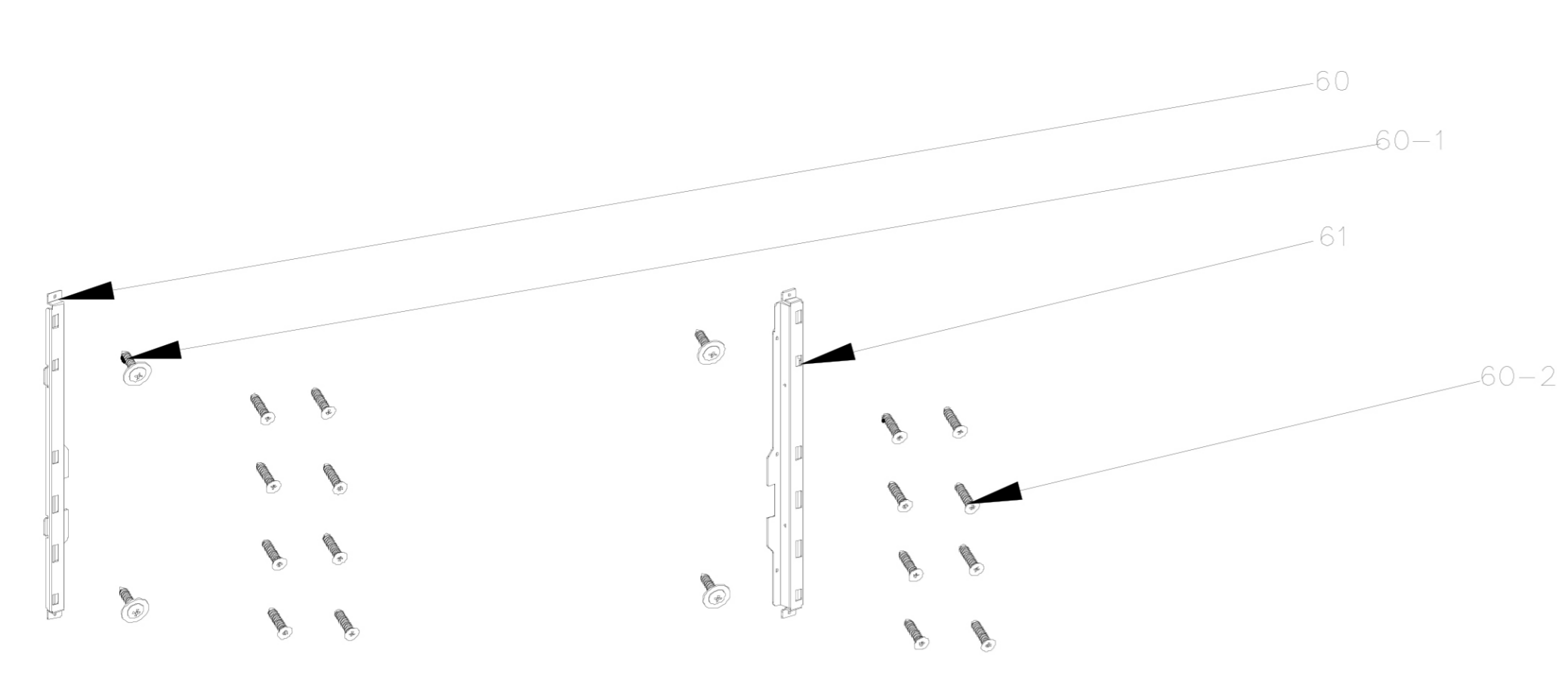
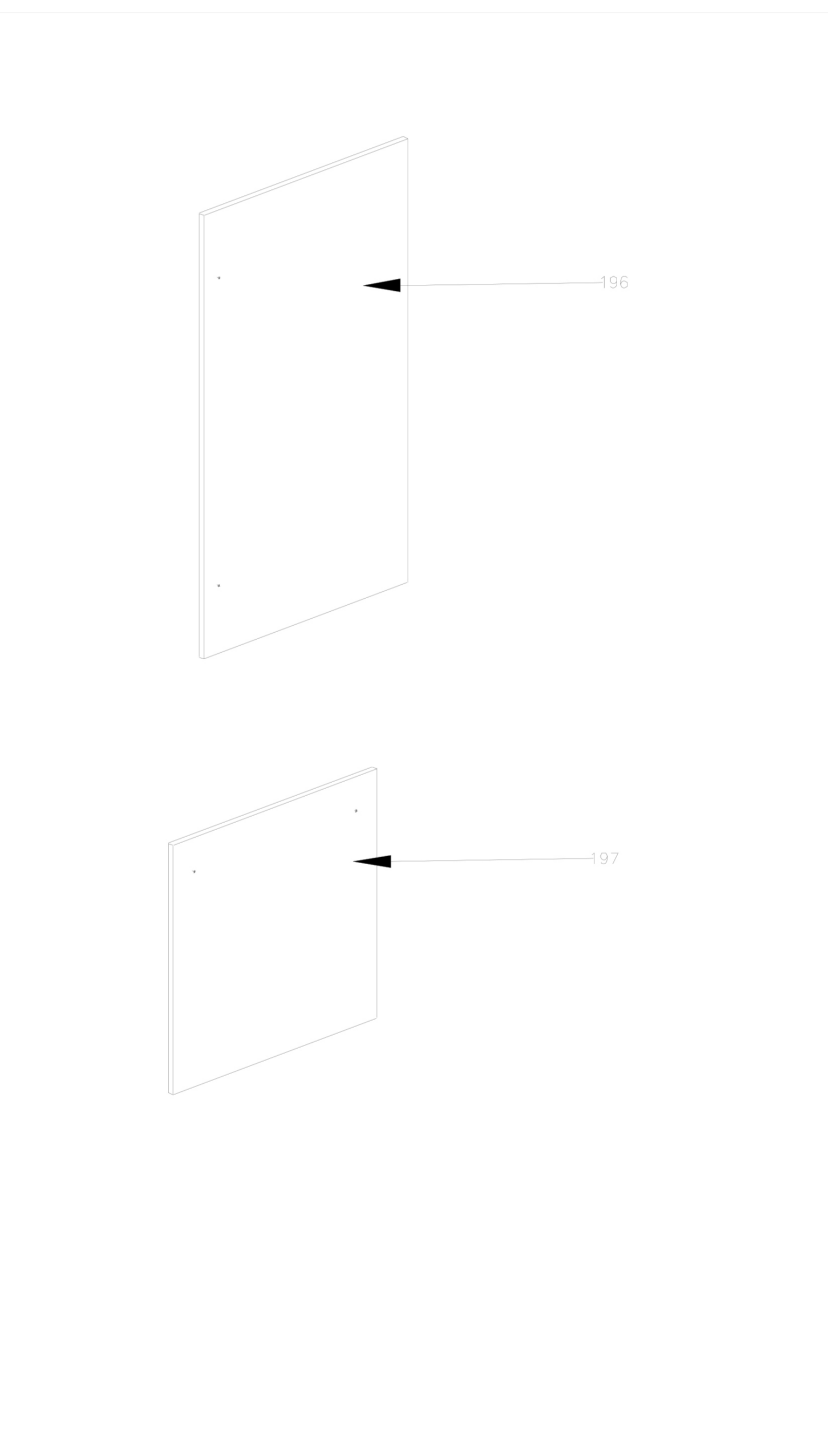
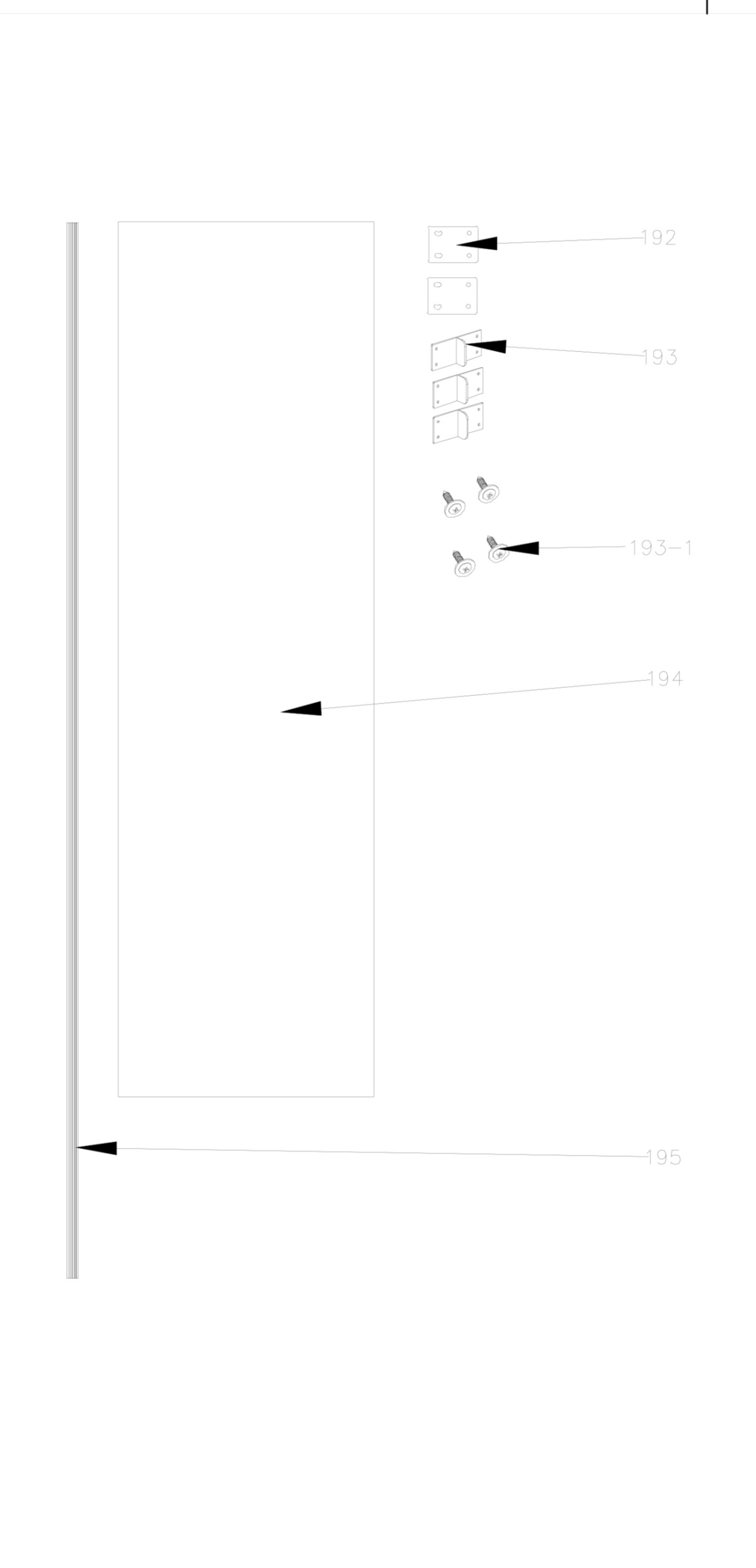
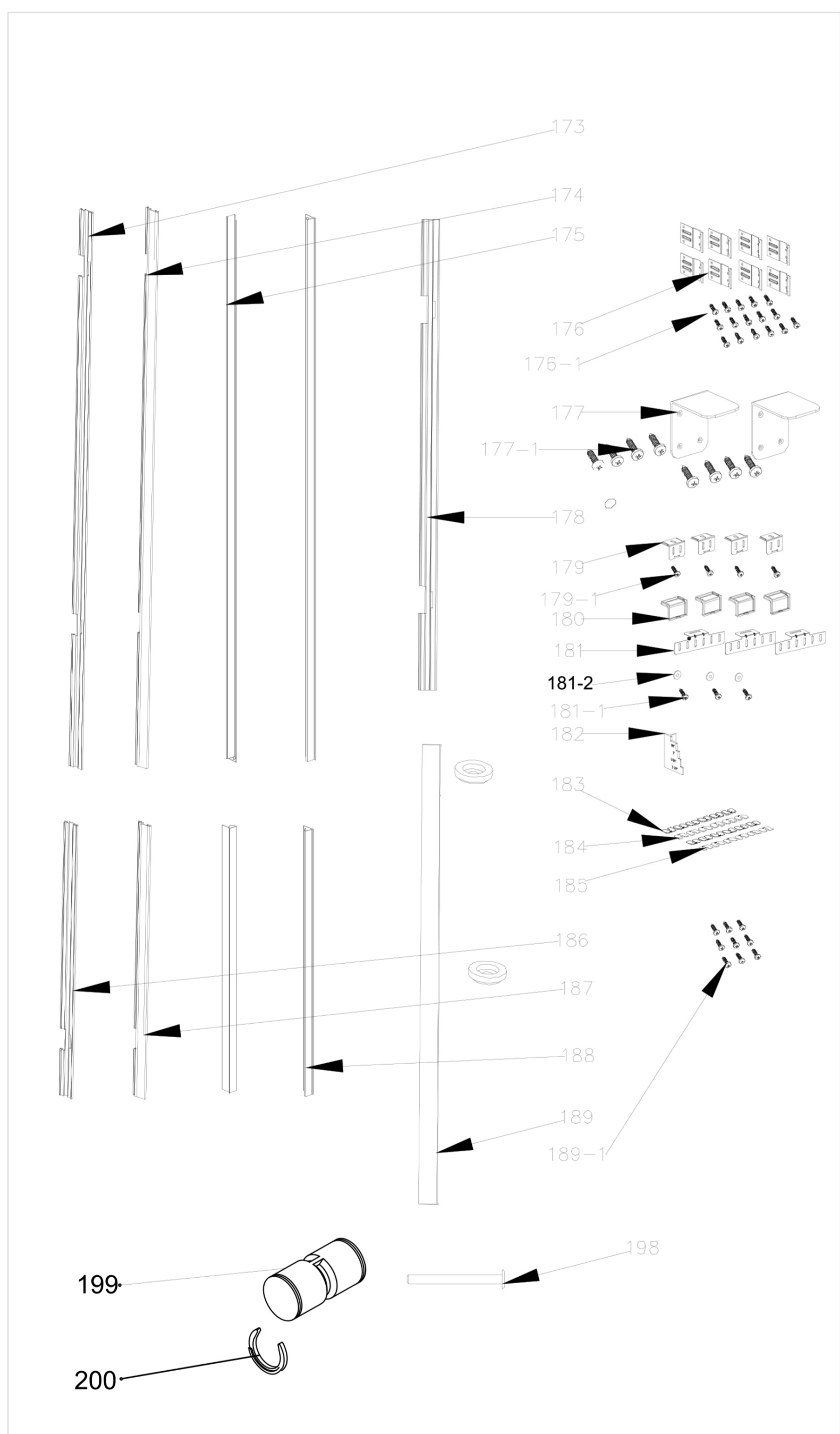
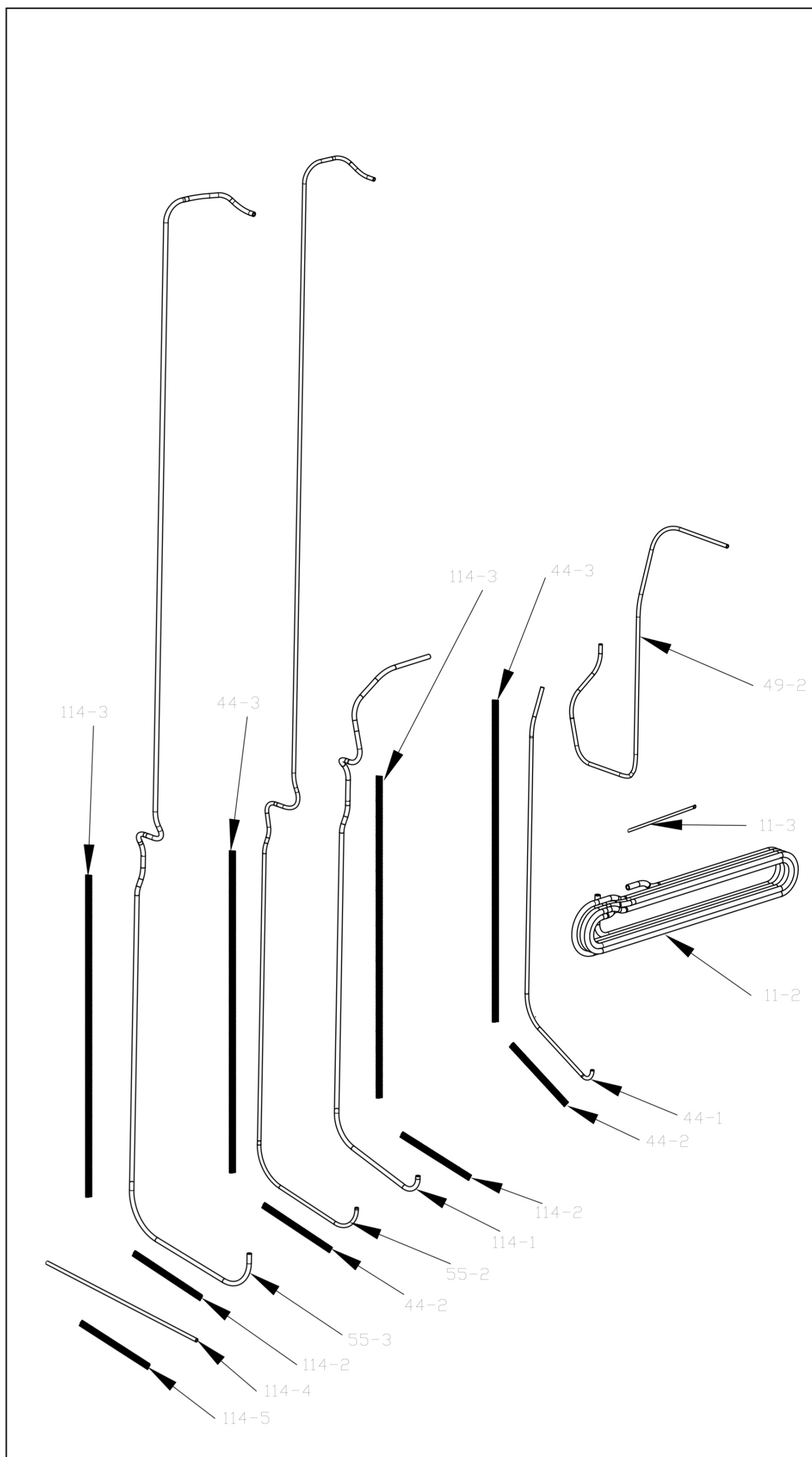
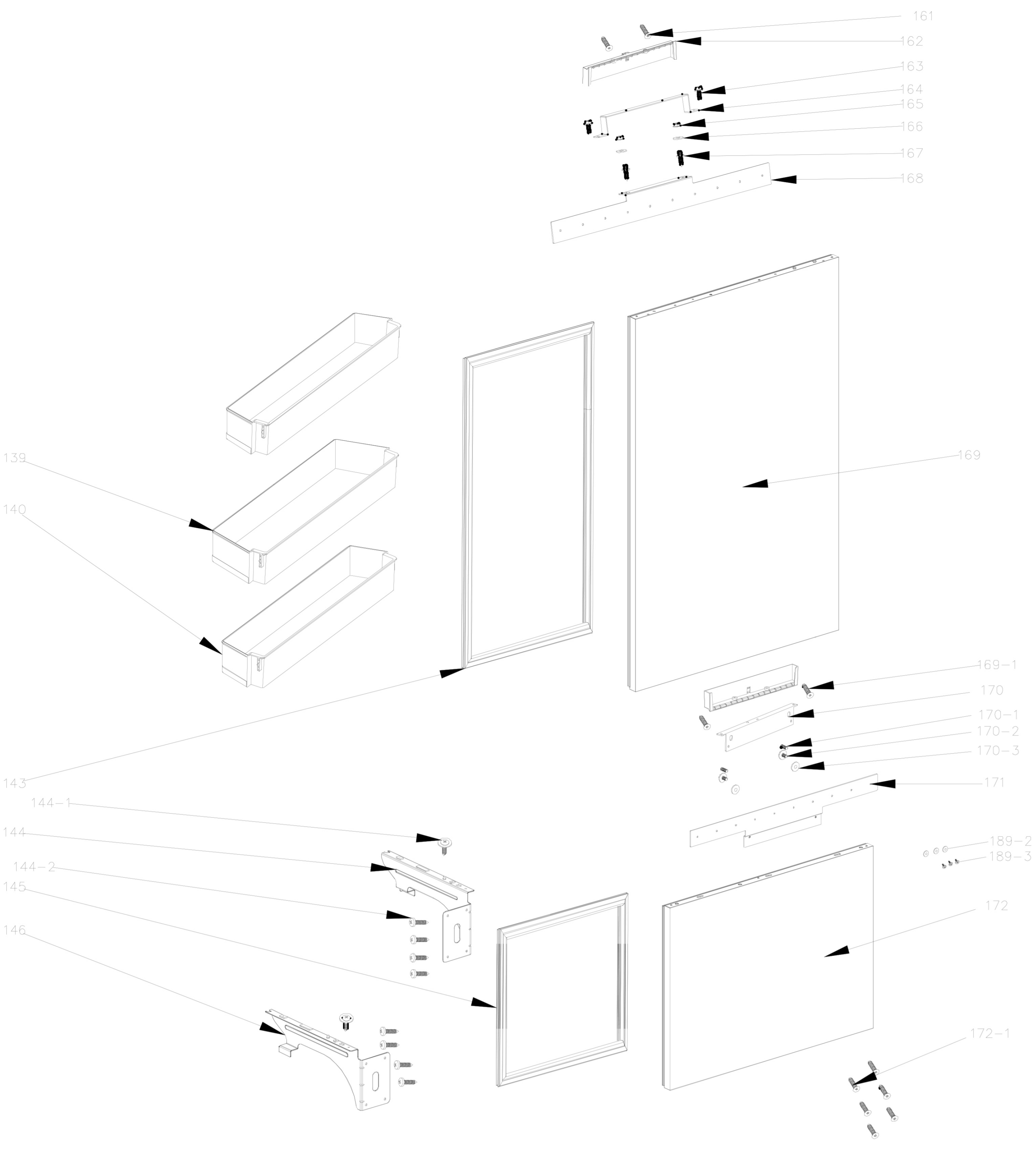


Exploded view of 【VBBM1601EWE】







No.	Item Code	Name
1	2.00.TQ020196-0	Foamed Cabinet
2	1.06.TQ6870-368	Top Rail Sensor Base
2-1	1.13.F60200-104	Countersunk head stainless steel bolts
3	1.11.01101TQ-03	Upper Hinge
3-1	1.13.F61200-104	Countersunk head stainless steel bolts
4	1.06.TQ4675-368	Fridge Sidelights Transparent Part
5	1.06.TQ4679-368	Sidelights Front Cover For Fridge
6	1.06.TQ4678-368	Sidelights Rear Cover For Fridge (Right)
6-1	1.12.B48250-AB7	Screws
7	1.06.TQ4771-368	Fridge Sidelights
8	1.06.TQ4210-368	Fridge Sensor Cover
9	1.06.TQQT42-368	Rear Fixing Part (Right)
10	1.06.TQQT40-368	Fixing Part
11	1.06.TQ3520-368	Storage Water Pipe Fixing Pipe
11-1	1.12.C39121-AB7	Self-tapping screws
11-2	1.05.341806-368	Water storage pipe
11-3	1.05.341A06-368	Water storage pipe into water dispenser water valve pipe
12	1.11.03101TQ-03	Bottom Hinge
13	1.06.TQ4772-368	Fridge Sky LED Light
13-1	1.12.B39160-AB7	Self-tapping screws
14	1.06.TQ4673-368	Freezer Sky Light Cover
15	1.06.TQ4223-368	Defrost Sensor Holder
15-1	2.32.ATQ303-402	Air sensor line for freezers
16	2.23.26TQ01-368	Freezer Fin Evaporator
17	1.11.04368TQ-17	Matallic Freezer Water Tray
18	1.11.97408TQ-02	Upper Telescopic Guide For Fridge(Right)
19	1.06.TQ357B-368	Upper Telescopic Guide Fixing Part For Fridge (Right)
21	1.06.TQ357D-368	Bottom Telescopic Guide Fixing Part For Fridge(Right)
22	1.11.97408TQ-04	Bottom Telescopic Guide For Fridge(Right)
23	1.06.TQ357F-368	Upper Telescopic Guide Fixing Part For Freezer (Right)
23-1	1.13.T60160-104	Round head stainless steel bolts
24	1.11.97408TQ-06	Upper Telescopic Guide For Freezer (Right)
25	1.06.TQ357H-368	Upper Telescopic Guide Stoper For Freezer (Right)
25-1	1.12.B39160-AB7	Self-tapping screws
26	1.06.TQ357G-368	Bottom Telescopic Guide Fixing Part For Freezer (right)
27	1.11.97408TQ-08	Bottom Telescopic Guide For Freezer (Right)
28	1.06.TQ9610-368	Upper Vent
29	1.06.TQ9611-368	Bottom Vent
30	2.28.11368TQ-03	Vent Cover
31	1.06.TQ357I-368	Bottom Telescopic Guide Fixing Part For Freezer (Right)
32	1.11.97408TQ-07	Freezer Bottom Telescopic Guide (Left)
33	1.06.TQ357E-368	Upper Telescopic Guide Fixing Part For Freezer (Left)
34	1.11.97408TQ-05	Freezer Upper Telescopic Guide (Left)
35	1.06.TQ357C-368	Bottom Telescopic Guide Fixing Part For Fridge (Left)
35-1	1.12.B39160-AB7	Self-tapping screws
36	1.11.97408TQ-03	Bottom Telescopic Guide For Fridge (Left)
36-1	1.13.T40160-104	Countersunk head stainless steel bolts
37	1.06.TQ357A-368	Upper Telescopic Guide Fixing Part For Fridge (Left)
38	1.11.97408TQ-01	Upper Telescopic Guide For Fridge (Left)
39	1.29.11X101-000	Light switch
40	1.27.18A0XX-368	Ice Maker
40-1	1.13.A40120-104	Screws
41	1.38.09PS368-02	Inlet Pipe (Elbow) of Ice Maker
42	1.05.35TQ02-368	Ice Maker water Inlet pipe
43	1.38.09PS368-01	Ice Maker Inlet Pipe Seal Part
44	1.05.34TQ02-368	Ice Maker Inlet Pipe Connector
44-1	1.05.341C06-368	Ice maker water inlet pipe
44-2	1.11.02368TQ-07	Hose spring
44-3	1.11.02368TQ-09	Hose spring
45	2.24.1036802-03	Embedded Box For water way
45-1	1.12.B48160-AB4	Self-tapping screws
46	1.06.TQ3210-368	Hinge Cover
47	1.05.31TQ05-368	Rotating Plate of Water Dispenser
48	1.05.28TQ01-368	Press Plate For Water Dispenser
49	1.05.30TQ01-368	Water Dispenser Cover
49-1	1.12.C39121-AB7	Self-tapping screws
49-2	1.05.341B06-368	Water Dispenser Pipe
50	1.05.32TQ05-368	Water Dispenser Pipe Holder
50-1	1.12.B39160-AB7	Self-tapping screws
51	1.31.A7242X-368	Refrigerated water dispenser water valve assembly
51-1	1.13.C40080-106	bolt
52	1.06.TQQT41-368	Rear Fixing Part (Left)
52-1	1.12.B39160-AB7	Self-tapping screws
55-2	1.05.341906-368	filter water outlet pipe
55-3	1.05.340916-368	filter water inlet pipe
53	2.23.160001-368	Fridge Fin Evaporator
54	1.06.TQ7171-368	Water Filter Cover
55	1.05.05TQ05-368	Water Filter
55-1	1.12.C39121-AB7	Self-tapping screws
56	1.06.TQ4674-368	Fridge Sky LED Base
57	1.06.TQ4677-368	Sidelights Rear Cover For Fridge(Left)
57-1	1.12.C39121-AB7	Self-tapping screws
58	1.06.TQ4611-368	Fridge Sky LED Light Base Cover
59	1.06.TQ4717-368	Fridge Sky LED Display Film
60	2.24.2636802-01	The Rack Of Fridge (Left)
60-1	1.13.T48160-104	Self-tapping screws
60-2	1.12.B39160-AB7	Self-tapping screws
61	2.24.2636802-02	The Rack for Fridge (Left)
62	2.24.2536802-02	Fridge Rack Holder(right)
62-1	1.12.F29013-AB4	Self-tapping screws
63	1.11.71368TQ-02	Extrusion Bar For Fridge Bracket (Side)
64	1.42.11TQ39-368	Glass Shelves

No.	Item Code	Name
65	1.11.71368TQ-01	Extrusion Bar For Fridge Bracket (Front&Rear)
66	2.24.2536802-01	Fridge Rack Holder
67	1.11.71368TQ-03	Extrusion Bar For Crisper Box (Rear)
68	1.11.71368TQ-04	Extrusion Bar For Crisper Box (Side)
69	1.42.10TQ39-368	Glass Shelves
70	1.11.71368TQ-07	Extrusion Bar For Crisper Box (Front)
71	1.06.TQ2371-368	Fridge Upper Crisper Drawer
72	1.06.TQ2370-368	Fridge Upper Crisper Cover
73	1.11.71368TQ-05	Extrusion Crisper Handle
74	1.06.TQ2373-368	Bottom Crisper Drawer
75	1.06.TQ2372-368	Bottom Crisper Drawer Cover
76	1.06.TQ357J-368	Upper Telescopic Guide Stoper For Freezer (Left)
77	1.46.3802TQ-002	Ice Scraper
78	1.06.TQ4471-368	Ice Container
78-1	1.13.A40120-104	Screws
79	1.11.71368TQ-06	Stopper of upper freezer drawers
80	2.24.2136802-01	Freezer Upper Drawer
81	2.24.2136802-09	Freezer Bottom Drawer
82	1.11.55368TQ-01	Main Control Panel Box
83	1.13.A40120-104	Screws
84	1.06.TQ7580-368	PC board Isolation column
85	1.27.01A202-368	Main Control Panel
86	1.11.06368TQ-11	Hinge Fixer
86-1	1.13.G60210-104	Compressor Compartment fixing bolts
87	1.11.55TQ368-01	Control Board Box
87-1	1.13.A40120-104	Screws
88	1.28.AA1027-368	power cord
89	1.10.12090E-4XX	Compressor Assembly (Frequency Conversion)
89-1	1.12.F42013-AB4	Self-tapping screws
89-2	1.13.G60280-104	Compressor fixing bolts
90	1.06.TQ2780-041	power wiring fixer
90-1	1.13.A40120-104	Screws
91	1.27.06A0XX-000	Solenoid Valve
91-1	1.13.Y40160-104	Y model bolt
92	1.46.0400TQ-018	Drier-Filter
93	2.20.B4TQ00-000	Charging pipe
94	1.38.09PS368-04	Pin type wire holder
95	1.11.04368TQ-07	Compressor Compartment Holder Plate
95-1	1.13.C40080-106	Screws
96	1.06.TQ9670-368	Vent Fixing Part (Upper)
97	1.11.04368TQ-04	Side Plate Strengthen Iron for Comperssor Compartment
98	1.11.04368TQ-30	The Plate for Compressor Compartment (Rear)
98-1	1.13.A40120-104	Screws
99	1.11.06368TQ-08	Roller Bracket
100	1.06.TQ3740-368	Roller
101	1.11.06368TQ-09	Roller Support Pin
102	1.11.06368TQ-04	Adjustable Feet Shell (Left)
103	1.11.06368TQ-03	Adjustable Feet Thread Adjusting Pole
104	1.11.06368TQ-02	Adjustable Feet Driven Gear
105	1.11.06368TQ-05	Adjustable Feet Shell (Right)
106	1.11.06368TQ-01	Adjustable Feet Driving Gear
107	1.11.06368TQ-10	Split Pin
108	1.11.06368TQ-06	Adjustment Rotary Pole (long)
109	1.11.06368TQ-15	water value fix parts
109-1	1.18.U300TQ-005	Shock absorbing foam
109	1.11.06368TQ-15	Water valve installation fixing part
109-1	1.18.U300TQ-005	Shock-absorbing foam
110	1.11.04368TQ-02	The Plate of Compressor Compartment (Left)
111	1.11.04368TQ-05	Bottom Fixing Part of Fixing Plate on the Vent
112	1.06.TQ9671-368	Vent Fixing Part (Bottom)
113	1.11.06368TQ-16	The Cover for Comoressor Compartment Water Valve
114	1.31.A7241X-368	filter water feed valve assembly in the compresor compartment
114-1	1.05.340416-368	Water valve inlet water storage pipe
114-2	1.11.02368TQ-06	Hose spring
114-3	1.11.02368TQ-08	Hose spring
114-4	1.05.341506-368	Water inlet pipe (connected with customer water pipe)
114-5	1.11.02368TQ-05	Water inlet pipe (connected with customer water pipe)
115	1.11.04368TQ-25	Compressor Compartment Water Valve Hold Plate
116	2.31.TQ0611-368	compresor compartment inlet pipe protection pipe
117	1.11.04368TQ-29	compressor compartment inlet pipe protection pipe fixing card
117-1	1.12.C39121-AB7	Self-tapping screws
118	1.11.04368TQ-08	Partition Plate of Water Way in the Compressor Compartment
118-1	1.13.A40120-104	Screws
119	1.11.04368TQ-06	Bottom Plate of Compressor Compartment
120	1.11.04368TQ-10	The Main Control Baord Compressor Compartment
120-1	1.13.A40120-104	Screws
121	1.11.06368TQ-07	Adjustment Rotary Pole(short)
122	1.09.A1A0TQ-368	Codenser
122-1	1.12.B48250-AB4	Screws
123	1.06.TQ4420-368	Compressor Compartment Water Tray
124	1.06.TQ1326-368	Freezer Drain Pipe
125	1.06.TQ1325-368	Fridge Drain Pipe
126	1.11.04368TQ-09	Plate for Fan of Condenser
126-1	1.13.A40120-104	Screws
127	1.06.TQ7511-368	Fan blade of condenser
128	1.06.TQ9J20-368	Holder Base for Fan of Condenser
128-1	1.12.F42013-AB4	Self-tapping screws
129	1.11.04368TQ-03	The Plate of Compressor Compartment (Right)
130	1.33.ATQ130-368	The Fan for Condenser
131	1.06.TQ9J21-368	Holder Plate for Fan of Consenser
131-1	1.12.F42013-AB4	Self-tapping screws
132	1.06.TQ4970-368	Fridge Wind Duct Cover (Rear Part)
132-1	1.12.B39160-AB7	Self-tapping screws

No.	Item Code	Name
133	1.33.DTQ433-386	Fridge Fan Aassmby
133-1	1.12.C39120-AB7	Fan plate screws
134	1.33.DTQ431-386	Fridge Air Damper
135	1.31.A2830X-368	Fridge Air Damper
136	1.06.TQQT20-368	Deodorier Cover
137	1.44.TDTQ-00011	charcoal pack
138	1.16.FDBTQB-368	Fridge AirFlow Foam Cover
139	1.06.TQ0671-368	Fridge Balcony
140	1.06.TQ0670-368	Fridge Balcony
141	2.03.E1036808-0	Fridge Wind Duct Part Trim
142	1.06.TQ4910-368	Fridge AirFlow Cover
142-1	1.12.B40250-AB7	Screws
143	2.25.100103-368	fridge door seal assembly
144	2.24.2140802-04	Bottom Drawer Bracket For Freezer (Right)
144-1	1.12.C39121-AB7	Self-tapping screws
144-2	1.13.T60160-104	Round head stainless steel bolts
145	2.25.100203-368	freezer door seal assembly
146	2.24.2140802-03	Bottom Drawer Bracket For Freezer (Left)
147	1.16.FDBTQA-368	Fridge AirFlow Foam
148	1.42.TQ7093-368	Display glass panel
149	1.06.TQ4610-368	Display Panel Cover (Upper)
149-1	1.12.W35600-AB4	Self-tapping screws
150	1.27.03A1XX-368	Display Panel
150-1	2.32.ATQ301-368	The display board connector
151	1.06.TQ4671-368	Display Rear Cover
152	1.16.FDBTQC-368	Display Partition Foam
153	1.06.TQ4670-368	Display Panel Cover (Bottom)
153-1	1.12.B39160-AB7	Self-tapping screws
153-2	1.12.B39160-AB7	Self-tapping screws
154	1.30.3D3604-368	Illuminate Assembly
155	1.06.TQ4672-368	Display Panel Light Cover
156	1.06.TQ4974-368	Freezer AirFlow Cover (Rear Part)
156-1	1.12.B39160-AB7	Self-tapping screws
157	1.33.DTQ431-041	Freezer Centrifugla Fan Aassmby
157-1	1.12.C39120-AB7	Fan plate screws
158	1.18.U050TQ-001	Freezer Evaporater Front Foam
159	1.06.TQ4972-368	Freezer AirFlow Cover
159-1	1.12.B40250-AB7	Screws
159-2	2.32.DTQ801-341	Air sensor for Freezer compartment
160	1.06.TQ4973-368	Freezer AirFlow Terminal Cover
160-1	1.12.C39121-AB7	Self-tapping screws
161	1.13.A40120-104	Screws
162	1.06.TQ1170-368	Trim For Adjusting Device
163	1.13.G50130-104	Flange Bolts
164	2.24.2643802-02	Door trim support plate
165	1.14.E08000-00F	Nut with washer
166	1.14.A08500-00F	Washer
167	1.13.Z600XX-105	Adjustable bolt
168	2.24.2436801-11	Door panel fastener of the refrigeration regulating device
169	2.01.R3TQ02-368	Fridge Formed Door
169-1	1.13.A40120-104	Screw
170	2.24.2436801-13	Adjusting device door shell fastener
170-1	1.13.Z60135-368	Screw
170-2	1.13.G50130-104	Flange Bolts
170-3	1.14.A60200-00F	Bigger Washer (A Class)
171	2.24.2436801-12	Refrigerated under-adjustment device door plate fixing
172	2.01.F0TQ02-368	Freezer Formed Door
172-1	1.13.D60150-104	Adjustable bolt
173	2.31.TQ0913-368	Cabinet Install Sealing Strip (Upper Left)
174	2.31.TQ0914-368	Cabinet Install Sealing Strip (Upper Right)
175	2.31.TQ0911-368	Trim Strip For Fridge Wooden Door
176	1.11.04368TQ-18	Cambinet Installion Fixing Plate
176-1	1.13.A40120-104	Screw
177	1.11.04368TQ-20	Cambinet Fixing Part
177-1	1.12.S80060-AB4	Plastic expansion bolts
178	2.31.TQ0910-368	Cabinet Install Sealing Strip (Upper)
179	1.11.04368TQ-21	Fridge Wooden Door Iron Fixing Part
179-1	1.13.A40120-104	Screw
180	1.06.TQ0373-368	Trim For Fridge Wooden Door Fixing Part Iron
181	1.11.04368TQ-31	Freezer Wooden Door Fixing Part
181-1	1.12.B48160-AB4	Self-tapping screws
181-2	1.14.A00500-03F	Washer
182	1.06.TQ0372-368	Locating Element
183	1.06.TQ1540-368	Adjusting Gasket For Freezer
184	1.06.TQ1541-368	Adjusting Gasket For Freezer
185	1.06.TQ1542-368	Adjusting Gasket For Freezer
186	2.31.TQ0915-368	Cabinet Install Sealing Strip (Bottom Left)
187	2.31.TQ0916-368	Cabinet Install Sealing Strip (Bottom right)
188	2.31.TQ0912-368	Trim Strip For Freezer Wooden Door
189	1.06.TQ0374-368	Trim For Upper Freezer Wooden Door
189-1	1.12.M40140-MS4	Countersunk head galvanized wood thread
189-2	1.06.TQ0170-368	fix parts for freezer upper rim
189-3	1.12.B39160-AB5	Self-tapping screws
190	1.06.TQ7120-341	Magnetic switch mounting box
191	1.11.02341TQ-01	pipe
192	1.11.17368TQ-05	dual cabin-connection board
193	1.11.17368TQ-08	dual cabin- Bracket upper
193-1	1.13.A40120-104	dual cabin- Screw
194	1.18.U300TQ-002	dual cabin-Insulator
195	2.31.TQ0917-368	dual cabin-Center trim
198	1.11.03101TQ-10	Limited Pin
199	1.05.341606-368	Quick Release Fittings
200	1.05.341406-368	Pipe clock plate